

# Industrial Ethernet Switch - FL SWITCH SFNB 8TX



2891002

<https://www.phoenixcontact.com/pc/products/2891002>

Please be informed that the data shown in this PDF document is generated from our Online Catalog. Please find the complete data in the user documentation. Our General Terms of Use for Downloads are valid.

---



Ethernet switch, 8 TP RJ45 ports, automatic detection of data transmission speed of 10/100 Mbps (RJ45), autocrossing function

---

## Your advantages

- RJ45 ports support a transmission speed of 10/100 Mbps
- Local diagnostic indicators with LEDs
- Auto negotiation and autocrossing detection simplifies installation and setup

# Industrial Ethernet Switch - FL SWITCH SFNB 8TX



2891002

<https://www.phoenixcontact.com/pc/products/2891002>

## Commercial Data

Item number	2891002
Packing unit	1 pc
Minimum order quantity	1 pc
Note	Made to Order (non-returnable)
Product Key	DNN113
Catalog Page	Page 289 (C-6-2019)
GTIN	4046356457170
Weight per Piece (including packing)	413 g
Weight per Piece (excluding packing)	413 g
Customs tariff number	85176200
Country of origin	TW

## Technical Data

### Dimensions

Width	50 mm
Height	110 mm
Depth	70 mm

### Material specifications

Housing material	Aluminum
------------------	----------

### Mounting

Mounting type	DIN rail
---------------	----------

### Interfaces

#### Ethernet (RJ45)

Connection method	RJ45
Note on the connection method	Auto negotiation and autocrossing
Transmission speed	10/100 Mbps
Transmission physics	Ethernet in RJ45 twisted pair
Transmission length	100 m (per segment)
Signal LEDs	Data receive, link status
No. of channels	8 (RJ45 ports)

### Product properties

Type	Block design
Product type	Switch
MTTF	95.6 Years (MIL-HDBK-217F standard, temperature 25°C, operating cycle 100%)

#### Switch functions

Basic functions	Unmanaged switch / auto negotiation, complies with IEEE 802.3, store and forward switching mode
MAC address table	2k
Status and diagnostic indicators	LEDs: U <sub>S</sub> , link and activity per port
Additional functions	Autonegotiation

#### Security functions

Basic functions	Unmanaged switch / auto negotiation, complies with IEEE 802.3, store and forward switching mode
-----------------	---

### Electrical properties

Local diagnostics	US Supply voltage Green LED
	LNK/ACT Link status/data transmission Green LED
	100 Data transmission speed Yellow LED
Maximum power dissipation for nominal condition	3.36 W

# Industrial Ethernet Switch - FL SWITCH SFNB 8TX



2891002

<https://www.phoenixcontact.com/pc/products/2891002>

Transmission medium	Copper
---------------------	--------

## Supply

Supply voltage	24 V DC
Supply voltage range	9 V DC ... 32 V DC
Power supply connection	Via COMBICON, max. conductor cross section 2.5 mm <sup>2</sup>
Residual ripple	3.6 V <sub>PP</sub> (within the permitted voltage range)
Max. current consumption	380 mA (@9 V DC)
Typical current consumption	140 mA (at U <sub>S</sub> = 24 V DC)

## Connection data

Connection method	Screw connection
Conductor cross section, rigid	0.2 mm <sup>2</sup> ... 2.5 mm <sup>2</sup>
Stripping length	7 mm

## Ambient conditions

Degree of protection	IP20
Ambient temperature (operation)	-10 °C ... 60 °C
Ambient temperature (storage/transport)	-20 °C ... 85 °C
Permissible humidity (operation)	5 % ... 95 % (non-condensing)
Permissible humidity (storage/transport)	5 % ... 95 % (non-condensing)
Air pressure (operation)	86 kPa ... 108 kPa (up to 1500 m above sea level)

## Approval data

### Conformity/Approvals

UL, USA / Canada	Class I, Div. 2, Groups A, B, C, D
------------------	------------------------------------

## EMC data

Electromagnetic compatibility	Conformance with EMC Directive 2004/108/EC
Noise emission	EN 61000-6-4
Noise immunity	EN 61000-6-2:2005

## LED signaling

Status display	LEDs: U <sub>S</sub> , link and activity per port
----------------	---

# Industrial Ethernet Switch - FL SWITCH SFNB 8TX





2891002


<https://www.phoenixcontact.com/pc/products/2891002>


## Approvals


	<b>IECEE CB Scheme</b> Approval ID: DK-88783-M1-UL			
	Nominal Voltage $U_N$	Nominal Current $I_N$	Cross Section AWG	Cross Section $\text{mm}^2$
			-	-


	<b>EAC</b> Approval ID: RU*-DE.*.B.00741/19
---	--

	<b>UL Listed</b> Approval ID: FILE E 140324
---	--


	<b>cUL Listed</b> Approval ID: FILE E 140324
--	---

	<b>KC</b> Approval ID: KCC-REI-PCK-FL289100
---	--

	<b>cUL Listed</b> Approval ID: FILE E 238705
---	---

	<b>UL Listed</b> Approval ID: FILE E 238705
---	--

	<b>cUL Listed</b> Approval ID: FILE E 199827
---	---

	<b>UL Listed</b> Approval ID: FILE E 199827
---	--

<b>cULus Listed</b>
---------------------

# Industrial Ethernet Switch - FL SWITCH SFNB 8TX



2891002

<https://www.phoenixcontact.com/pc/products/2891002>

## Classifications

### ECLASS

ECLASS-9.0	19170106
ECLASS-10.0.1	19170402
ECLASS-11.0	19170402

### ETIM

ETIM 8.0	EC000734
----------	----------

### UNSPSC

UNSPSC 21.0	43222600
-------------	----------

# Industrial Ethernet Switch - FL SWITCH SFNB 8TX



2891002

<https://www.phoenixcontact.com/pc/products/2891002>

## Environmental Product Compliance

REACH SVHC	Lead 7439-92-1
China RoHS	Environmentally Friendly Use Period = 10; For information on hazardous substances, refer to the manufacturer's declaration available under "Downloads"

2891002

<https://www.phoenixcontact.com/pc/products/2891002>

## Accessories

### PCB connector

PCB connector - MSTB 2,5/ 4-ST - 1754481

<https://www.phoenixcontact.com/pc/products/1754481>



PCB connector, nominal cross section: 2.5 mm<sup>2</sup>, color: green, nominal current: 12 A, rated voltage (III/2): 320 V, contact surface: Tin, type of contact: Female connector, number of potentials: 4, number of rows: 1, number of positions: 4, number of connections: 4, product range: MSTB 2,5/...-ST, pitch: 5 mm, connection method: Screw connection with tension sleeve, screw head form: L Slotted, conductor/PCB connection direction: 0 °, locking clip: - Locking clip, plug-in system: COMBICON MSTB 2,5, locking: without, mounting: without, type of packaging: packed in cardboard

---

### Surge protection device

Surge protection device - DT-LAN-CAT.6+ - 2881007

<https://www.phoenixcontact.com/pc/products/2881007>



Surge protection in accordance with Class E<sub>A</sub> (CAT6<sub>A</sub>), for Gigabit Ethernet (up to 10 Gbps), token ring, FDDI/CDDI, ISDN, and DS1. Suitable for Power over Ethernet (PoE++ / 4PPoE) "Mode A" and "Mode B". RJ45 attachment plug with separate grounding cable and ground connection snap-on foot for NS 35 DIN rails.



# Industrial Ethernet Switch - FL SWITCH SFNB 8TX



2891002

<https://www.phoenixcontact.com/pc/products/2891002>

## Patch cable

Patch cable - FL CAT5 PATCH 0,5 - 2832263

<https://www.phoenixcontact.com/pc/products/2832263>

Patch cable, CAT5, assembled, 0.5 m



---

## Patch cable

Patch cable - FL CAT5 PATCH 1,0 - 2832276

<https://www.phoenixcontact.com/pc/products/2832276>

Patch cable, CAT5, assembled, 1 m



# Industrial Ethernet Switch - FL SWITCH SFNB 8TX



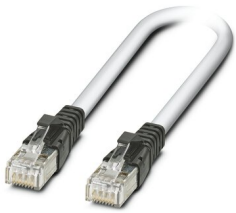
2891002

<https://www.phoenixcontact.com/pc/products/2891002>

## Patch cable

Patch cable - FL CAT5 PATCH 2,0 - 2832289

<https://www.phoenixcontact.com/pc/products/2832289>



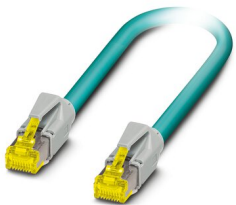
Patch cable, CAT5, assembled, 2 m

---

## Patch cable

Patch cable - NBC-R4AC-R4AC-IE8A/.../... - 1411854

<https://www.phoenixcontact.com/pc/products/1411854>



Patch cable, degree of protection: IP20, number of positions: 8, 10 Gbps, CAT6<sub>A</sub>, cable outlet: straight, Ethernet

# Industrial Ethernet Switch - FL SWITCH SFNB 8TX



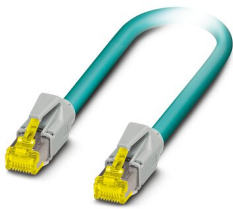
2891002

<https://www.phoenixcontact.com/pc/products/2891002>

## Patch cable

Patch cable - NBC-R4AC/10G-R4AC/10G-94F/2,0 - 1408360

<https://www.phoenixcontact.com/pc/products/1408360>



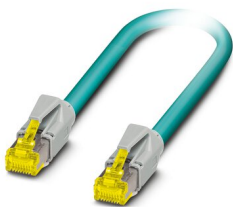
Patch cable, CAT6<sub>A</sub>, 4-pair, shielded, connection not crossed (line), assembled at both ends with RJ45/IP20 connectors, outer sheath material: PUR, length: 2.0 m

---

## Patch cable

Patch cable - NBC-R4AC/10G-R4AC/10G-94F/3,0 - 1408365

<https://www.phoenixcontact.com/pc/products/1408365>



Patch cable, CAT6<sub>A</sub>, 4-pair, shielded, connection not crossed (line), assembled at both ends with RJ45/IP20 connectors, outer sheath material: PUR, length: 3.0 m

# Industrial Ethernet Switch - FL SWITCH SFNB 8TX



2891002

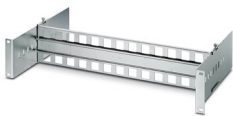
<https://www.phoenixcontact.com/pc/products/2891002>

## DIN rail adapter

DIN rail adapter - FL DIN RA - 2891053

<https://www.phoenixcontact.com/pc/products/2891053>

The FL DIN RA is installed in a standard, 19-inch rack (EIA-310-D, IEC 60297-3-100) to allow DIN rail mounted equipment to be rack mounted.



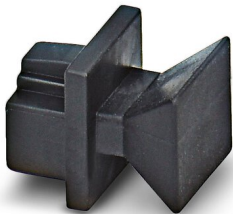
---

## Dust protection

Dust protection - FL RJ45 PROTECT CAP - 2832991

<https://www.phoenixcontact.com/pc/products/2832991>

Dust protection caps for RJ45 socket



# Industrial Ethernet Switch - FL SWITCH SFNB 8TX



2891002

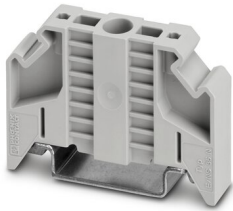
<https://www.phoenixcontact.com/pc/products/2891002>

## End clamp

End clamp - E/NS 35 N - 0800886

<https://www.phoenixcontact.com/pc/products/0800886>

End clamp, width: 9.5 mm, color: gray



---

## Port Guard Security Element

Port Guard Security Element - FL SEC PAC 4TX - 2832865

<https://www.phoenixcontact.com/pc/products/2832865>

Layer1 security elements for four RJ45 network connections for use with patch boxes and panels



---

Phoenix Contact 2022 © - all rights reserved

<https://www.phoenixcontact.com>

PHOENIX CONTACT GmbH & Co. KG

Flachsmarktstraße 8

D-32825 Blomberg

+49 (0) 5235-3 00

[info@phoenixcontact.com](mailto:info@phoenixcontact.com)