

IBS IL 24 BK-DSUB - Bus coupler

2742104

<https://www.phoenixcontact.com/us/products/2742104>

Please be informed that the data shown in this PDF document is generated from our online catalog. Please find the complete data in the user documentation. Our general terms of use for downloads are valid.



INTERBUS bus coupler, subminiature connection, 24 V DC, without accessories

Product description

The bus terminal module couples the Inline station to the INTERBUS remote bus. It provides the supply voltages U L and U ANA for the connected devices.

Features

- Remote bus connections in copper via D-SUB connectors
- Electrical isolation of the remote bus segments
- Automatic configuration of the outgoing interface as remote bus or local bus interface
- Supports up to 15 connected terminals with remote bus branch

Commercial data

Item number	2742104
Packing unit	1 pc
Minimum order quantity	1 pc
Note	Made to order (non-returnable)
Sales key	NULL
Product key	DRI111
Catalog page	Page 39 (AX-2007)
GTIN	4017918876777
Weight per piece (including packing)	311.1 g
Weight per piece (excluding packing)	311.1 g
Customs tariff number	85389091
Country of origin	DE

Technical data

Product properties

Type	modular
------	---------

System properties

INTERBUS-Master

Number of devices with parameter channel	63
Number of supported branch terminals with remote bus branch	max. 15

Module

ID code (dec.)	04
ID code (hex)	04
Length code (hex)	00
Length code (dec)	00
Process data channel	0 bit
Input address area	0 Byte
Output address area	0 Byte

Electrical properties

Protective circuit	Reverse polarity protection
--------------------	-----------------------------

Potentials: Bus coupler supply U_{BK} ; Communications power U_L (7.5 V) and the analog supply U_{ANA} (24 V) are generated from the bus coupler supply.

Supply voltage	24 V DC (via Inline connector)
Supply voltage range	19.2 V DC ... 30 V DC (including all tolerances, including ripple)
Current draw	max. 1.25 A (with max. number of connected I/O terminal blocks) typ. 100 mA (without connected Inline I/O terminals)

Potentials: Communications power (U_L)

Supply voltage	7.5 V DC \pm 5 %
----------------	--------------------

Potentials: Supply of analog modules (U_{ANA})

Supply voltage	24 V DC
Supply voltage range	19.2 V DC ... 30 V DC (including all tolerances, including ripple)

Connection data

Inline connector

Connection method	Spring-cage connection
Conductor cross section, rigid	0.09 mm ² ... 1.5 mm ²
Conductor cross section, flexible	0.09 mm ² ... 1.5 mm ²
Conductor cross section AWG	28 ... 16

Interfaces

IBS IL 24 BK-DSUB - Bus coupler



2742104

<https://www.phoenixcontact.com/us/products/2742104>

INTERBUS

Connection method	D-SUB-9 female/D-SUB-9 male
Transmission speed	500 kbps
Transmission physics	Copper

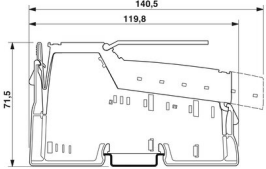
Inline local bus

Connection method	Inline data jumper
-------------------	--------------------

Supply

Connection method	8-pos. Inline connector
-------------------	-------------------------

Dimensions

Dimensional drawing	
Width	85 mm
Height	119.8 mm
Depth	71.5 mm

Material specifications

Color	green
-------	-------

Environmental and real-life conditions

Ambient conditions

Ambient temperature (operation)	-25 °C ... 55 °C
Degree of protection	IP20
Air pressure (operation)	80 kPa ... 106 kPa (up to 3000 m above sea level)
Air pressure (storage/transport)	70 kPa ... 106 kPa (up to 3000 m above sea level)
Ambient temperature (storage/transport)	-25 °C ... 85 °C
Permissible humidity (operation)	75 % ... 85 % (in the range of -25°C ... +55°C, appropriate measures against increased humidity (> 85%) must be taken.)
Permissible humidity (storage/transport)	75 % ... 85 % (Slight temporary condensation may sometimes appear on the housing, e.g. when the terminal block is brought out of a vehicle into an enclosed room.)

Mounting

Mounting type	DIN rail mounting
---------------	-------------------

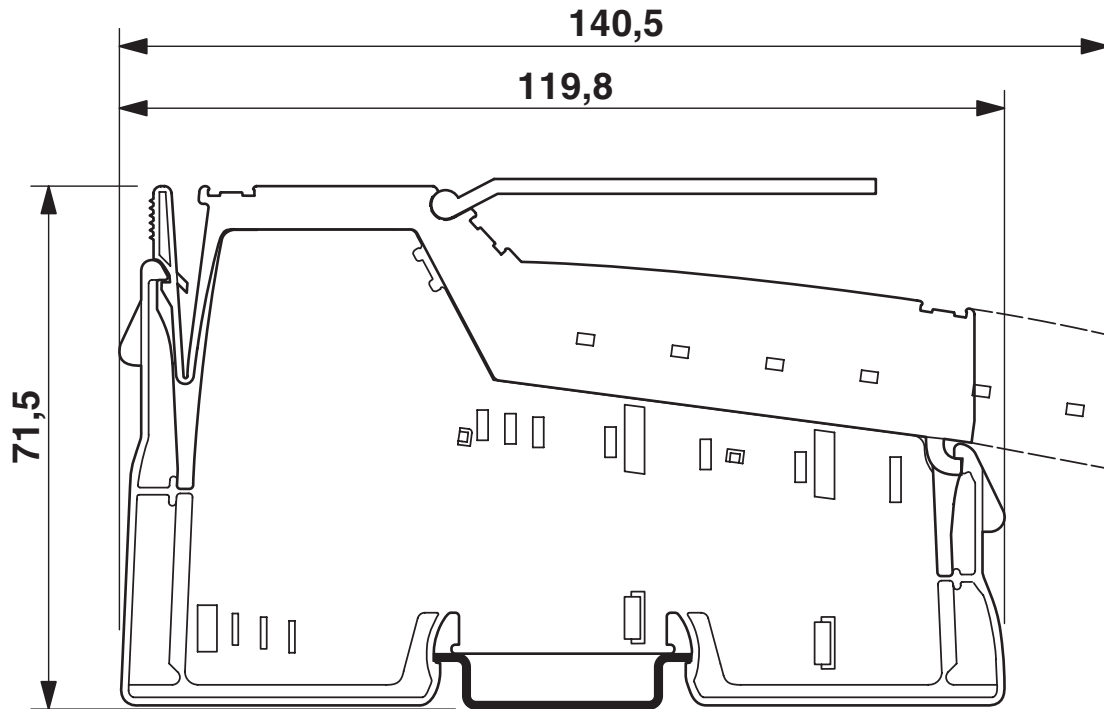
IBS IL 24 BK-DSUB - Bus coupler

2742104

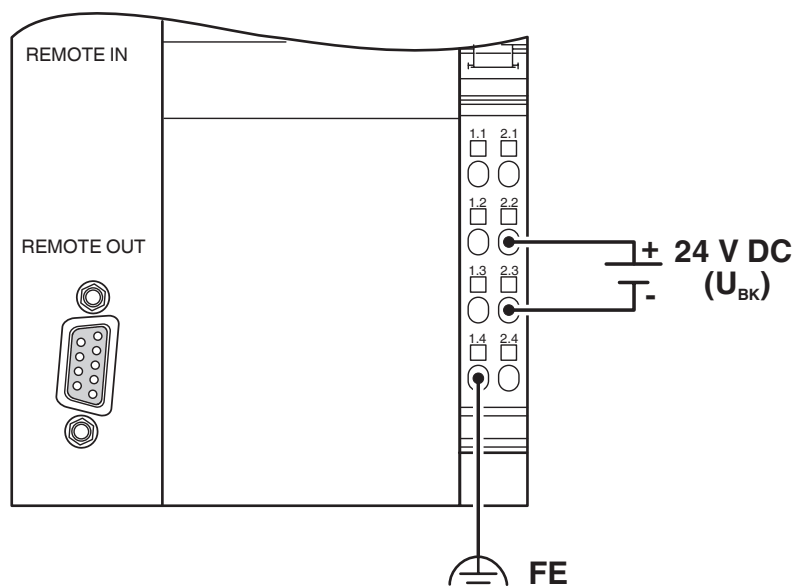
<https://www.phoenixcontact.com/us/products/2742104>

Drawings

Dimensional drawing



Connection diagram



IBS IL 24 BK-DSUB - Bus coupler

2742104

<https://www.phoenixcontact.com/us/products/2742104>



Accessories

IB IL SCN-8-CP - Inline connector

2727608

<https://www.phoenixcontact.com/us/products/2727608>

Inline connector, colored



IB IL FIELD 2 - Marking field

2727501

<https://www.phoenixcontact.com/us/products/2727501>

Marking field, width: 12.2 mm



IBS IL 24 BK-DSUB - Bus coupler

2742104

<https://www.phoenixcontact.com/us/products/2742104>



ESL 62X10 - Insert strip

0809492

<https://www.phoenixcontact.com/us/products/0809492>

Insert strip, Sheet, white, unlabeled, can be labeled with: Office printing systems, CMS-P1-PLOTTER, mounting type: insert, lettering field size: 62 x 10 mm, Number of individual labels: 72

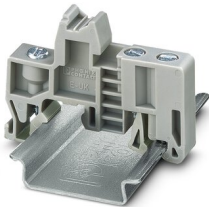


E/UK - End clamp

1201442

<https://www.phoenixcontact.com/us/products/1201442>

End clamp, material: PA, color: gray, Mounting on a DIN rail NS 32 or NS 35



Phoenix Contact 2023 © - all rights reserved
<https://www.phoenixcontact.com>

Phoenix Contact USA
586 Fulling Mill Road
Middletown, PA 17057, United States
(+717) 944-1300
info@phoenixcon.com